



22 Greystoke Avenue

Eggbuckland, Plymouth, PL6 5UL

£200,000



A well presented mid terrace home with a good size south facing garden to the rear. The accommodation comprises entrance hall, dual aspect lounge, kitchen/diner, two bedrooms, study/dressing room and a family bathroom. There is a front and enclosed rear garden perfect for entertaining in.



GREYSTOKE AVENUE, EGGBUCKLAND, PLYMOUTH, PL6 5UL

ACCOMMODATION

Entrance via a uPVC obscured double-glazed door with obscured glazed windows either side opens up into the entrance hall.

ENTRANCE HALL 7'11" x 3'10" (2.42 x 1.19)

Wood effect laminate flooring. Staircase rising to the first floor landing. Doorway to the lounge. Wooden door with obscured glazed panels opens up into the kitchen/diner.

LOUNGE 15'10" x 10'7" (4.85 x 3.23)

A dual aspect room with uPVC double-glazed window to the front & a uPVC double-glazed bay window to the rear overlooking the garden. Ceiling spotlights.

KITCHEN/DINER 15'8" narrowing to 5'2" x 13'10" narrowing to 10'5" (4.79 narrowing to 1.6 x 4.22 narrowing to 3.18)

Attractive matching base & wall mounted units to include integrated oven, space for an upright fridge/freezer, space for a washing machine & a dishwasher. Roll edge laminate work surfaces have inset 4 ring gas hob with a filter hood over. Wall mounted Glow-worm combination boiler concealed in unit. Tiled splash-back. Dual aspect with a uPVC double-glazed window to the front & one to rear. Tiled floor. Door to under-stairs storage cupboard. uPVC double-glazed French doors open up out to the garden.

FIRST FLOOR LANDING 6'3" x 5'5" (1.92 x 1.66)

Access hatch to roof void. uPVC double-glazed window to the rear overlooking the garden. Door to a shelved cupboard, bedroom, study/dressing room & bathroom.

BEDROOM ONE 10'6" x 9'10" (3.22 x 3.01)

uPVC double-glazed window to the front. Ceiling spotlights. Decorative cladding to feature wall. Wardrobe with hanging rail & shelving.

STUDY/DRESSING ROOM 10'7" x 7'2" (3.24 x 2.2)

uPVC double-glazed window to the rear overlooking the garden. Ceiling spotlights. Doorway opens up to the bedroom.

BEDROOM TWO 8'4" x 10'8" (2.56 x 3.26)

Ceiling spotlights. uPVC double-glazed window to the front.

OUTSIDE

The property is approached via a wrought iron gate which gives access to a path leading down to the front door which is bordered on both sides by terraces of garden laid to stone chippings & mulch with inset shrubs & plants. A hardstand bin area.

GARDEN

To the rear a south-facing garden which has a large decked seating area with outside tap, section of mulch chippings to one side. Steps lead down to a patio seating area where currently stands a garden shed. A couple steps then lead down to the main garden laid to lawn.

COUNCIL TAX

Plymouth City Council
Council Tax Band: A

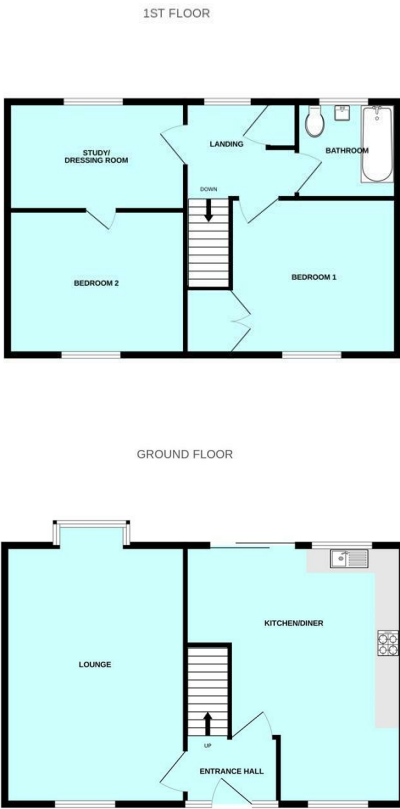
SERVICES

The property is connected to all the mains services: gas, electricity, water and drainage.

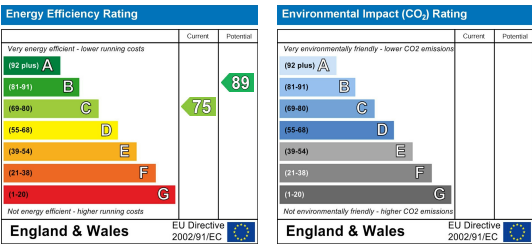
Area Map



Floor Plans



Energy Efficiency Graph



These particulars, whilst believed to be accurate are set out as a general outline only for guidance and do not constitute any part of an offer or contract. Intending purchasers should not rely on them as statements of representation of fact, but must satisfy themselves by inspection or otherwise as to their accuracy. No person in this firm's employment has the authority to make or give any representation or warranty in respect of the property.